

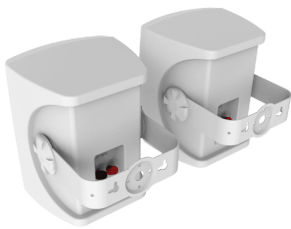


Pair 3-Way Wall Loudspeakers

SP-1800 EU SAP: 3635038 US SAP: 12928302
AV-1800+SP-1800 EU SAP: 4363209 US SAP: 70017411
TC3-AMP+SP-1800 EU SAP: 3692237 US SAP: 70017401
vav.link/sp-1800

5.25" Woofer 50w loudspeakers
Wall brackets included with 60° range of tilt adjustment
White, sold in pairs

Vision's SP-1800 professional wall mounted loudspeakers are super-easy to install, look beautiful, and produce rich and powerful sound. They are 240mm tall and use a 5.25 inch woofer – the most popular size for classroom, meeting room, and boardroom applications.



Three-Way

These loudspeakers use three drivers; a woofer, a squawker, and a tweeter. Asking a driver to produce a wide range of frequencies is always a compromise, so dividing the sonic range into three means each driver has a narrower range of frequencies to produce, resulting in less distortion and clearer sound.

Bass Reflex

A bass reflex port allows greater excursion of the woofer, allowing the woofer to produce lower frequencies, and the phase-delayed movement of air from behind the woofer to the front reinforces the bass even more.

Rugged Grille

A metal grille protects the drivers from physical interference.

Tough Finish

Constructed with tough ABS plastic, the finish withstands the rigors of the professional use.

Pro AV Applications

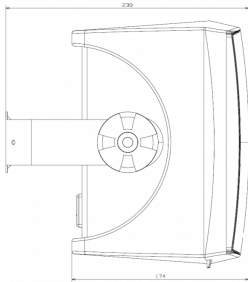
In small to medium presentation environments a wide dispersion is generally more important than microphone feedback management, so no horns are used.

Horizontal C bracket

The adjustable brackets allow the installer to easily angle up 30° or down 30°. Or leave the brackets off and use as shelf speakers.

Note

these are passive loudspeakers – there is no amplifier built in – so they need to be used with an external amplifier.



MANUAL

Manual

EN PDF 3.02 MB

files.visionaudiovisual.com/products/SP-1800/manuals/SP-1800_manual_en.pdf

CAD

CAD

ZIP 1.05 MB

<files.visionaudiovisual.com/products/SP-1800/cad/SP-1800.zip>

Dims

PDF 616.54 KB

files.visionaudiovisual.com/products/SP-1800/cad/SP-1800_dims.pdf

CAD

VND.DWG 55.88 KB

<files.visionaudiovisual.com/products/SP-1800/manuals/SP-1800.dwg>

IMAGE

Image 1800

PNG 2.11 MB

<files.visionaudiovisual.com/images/products/SP-1800/AV-1700+SP-1800.png>

Front angle

PNG 1.55 MB

files.visionaudiovisual.com/images/products/SP-1800/SP-1800_front_angle.png

Front

PNG 2.28 MB

files.visionaudiovisual.com/images/products/SP-1800/SP-1800_front.png

Rear angle

PNG 886.08 KB

files.visionaudiovisual.com/images/products/SP-1800/SP-1800_rear_angle.png

Rear

PNG 1.62 MB

files.visionaudiovisual.com/images/products/SP-1800/SP-1800_rear.png

Image

PNG 2.26 MB

<files.visionaudiovisual.com/images/products/SP-1800/SP-1800.png>

Dims

PNG 45.20 KB

files.visionaudiovisual.com/images/products/SP-1800/SP-1800_dims.png

Ont elevation dims

PNG 40.87 KB

files.visionaudiovisual.com/images/products/SP-1800/SP-1800_front_elevation_dims.png

Product Images

ZIP 14.64 MB

<files.visionaudiovisual.com/products/SP-1800/images/SP-1800.zip>

Product Images

PNG 2.26 MB

<files.visionaudiovisual.com/products/SP-1800/images/SP-1800.png>

Angle

PNG 886.08 KB

<files.visionaudiovisual.com/products/SP-1800/images/SP-1800-rear-angle.png>

Angle

PNG 1.55 MB

<files.visionaudiovisual.com/products/SP-1800/images/SP-1800-front-angle.png>

Dims

PNG 19.28 KB

files.visionaudiovisual.com/products/SP-1800/images/SP-1800_dims.png

Frequency response

JPEG 274.49 KB

files.visionaudiovisual.com/products/SP-1800/images/SP-1800_frequency_response.jpg

Product Images

PNG 2.97 MB

<files.visionaudiovisual.com/products/SP-1800/images/SP-1800-front.png>

Product Images

PNG 1.62 MB

<files.visionaudiovisual.com/products/SP-1800/images/SP-1800-rear.png>

Image 1800

PNG 2.11 MB

<files.visionaudiovisual.com/products/SP-1800/images/AV-1700-SP-1800.png>

Image 1800

PNG 1.53 MB

<files.visionaudiovisual.com/products/SP-1800/images/TC2-AMP4-SP-1800.png>

Product Images

PNG 2.35 MB

<files.visionaudiovisual.com/products/SP-1800/images/SP-1800TC3-AMP.png>

Front elevation dims

PNG 9.74 KB

files.visionaudiovisual.com/products/SP-1800/images/SP-1800_front_elevation_dims.png

Menu

PNG 1.12 MB

files.visionaudiovisual.com/products/SP-1800/images/SP-1800_menu.png

SPECIFICATIONS

PRODUCT DIMENSIONS

244 x 180 x 174 mm /9.61" x 7.1" x 6.85" (tall x wide x deep for each speaker)

PACKAGED DIMENSIONS

465 x 205 x 270 mm / 18.3" x 8.1" x 10.63"

PRODUCT WEIGHT

4.2 kg /9.26 lbs (per pair)

PACKAGED WEIGHT

4.67 kg /10.23 lbs (per pair)

CONSTRUCTION MATERIAL

ABS

COLOUR

White

POWER HANDLING

50 watts (RMS)

WOOFER

5.25"

SQUAWKER

1"

TWEETER

0.5"

INPUT TERMINALS

Binding post

OUTPUT IMPEDANCE

8 ohms

SENSITIVITY

89dB (1w/1m)

FREQUENCY RESPONSE

80Hz-20kHz

ACCESSORIES INCLUDED

2 x Wall brackets

WARRANTY

Lifetime return-to-base

COMPLIANCE

RoHS, WEEE, CE/ EMC, FCC, RCM-POC, RCM-SDOC, REACH

ORDER PART CODE

SP-1800 [EU SAP: 3635038 / US SAP: 12928302] Bundled with AV-1800 amplifier: AV-1800+SP-1800 [EU SAP: 4363209 / US SAP: 70017411] Bundled with TC3-AMP: TC3-AMP+SP-1800 [EU SAP: 3692237 / US SAP: 70017401]

VISION

The bottom of the page features a stylized landscape composed of several overlapping, semi-transparent green polygons in various shades, ranging from a light sage green to a dark forest green. The shapes create a sense of rolling hills or a modern, geometric terrain.

VISION